



HEART OF OHIO CLASSICAL ACADEMY

A Founders Classical Academy School

Arrival & Dismissal Procedures 2025-2026

Dear HOCA Families,

Please review our traffic flow procedures and bell schedule carefully. These guidelines are designed to maximize efficiency and, most importantly, **to ensure the safety of our students and everyone on our campus.**

Protecting our students and the entire campus community is our highest priority. Please observe the following safety protocols:

- **Vigilance near the Playground:** The loading zone is located directly next to the playground. Please be hyper-aware of your surroundings and watch for children at all times.
- **Designated Parking:** If you need to enter the building for school business, please park in the **Visitor Parking** spots located in the center aisle near the loading zone. **Do not** leave your vehicle unattended in the active carline lanes.
- **Respect "No Entry" Zones:** Never attempt to enter through the marked **"NO Entry"** or Exit lanes. This prevents dangerous wrong-way traffic.



Daily Bell Schedule

Morning Arrival

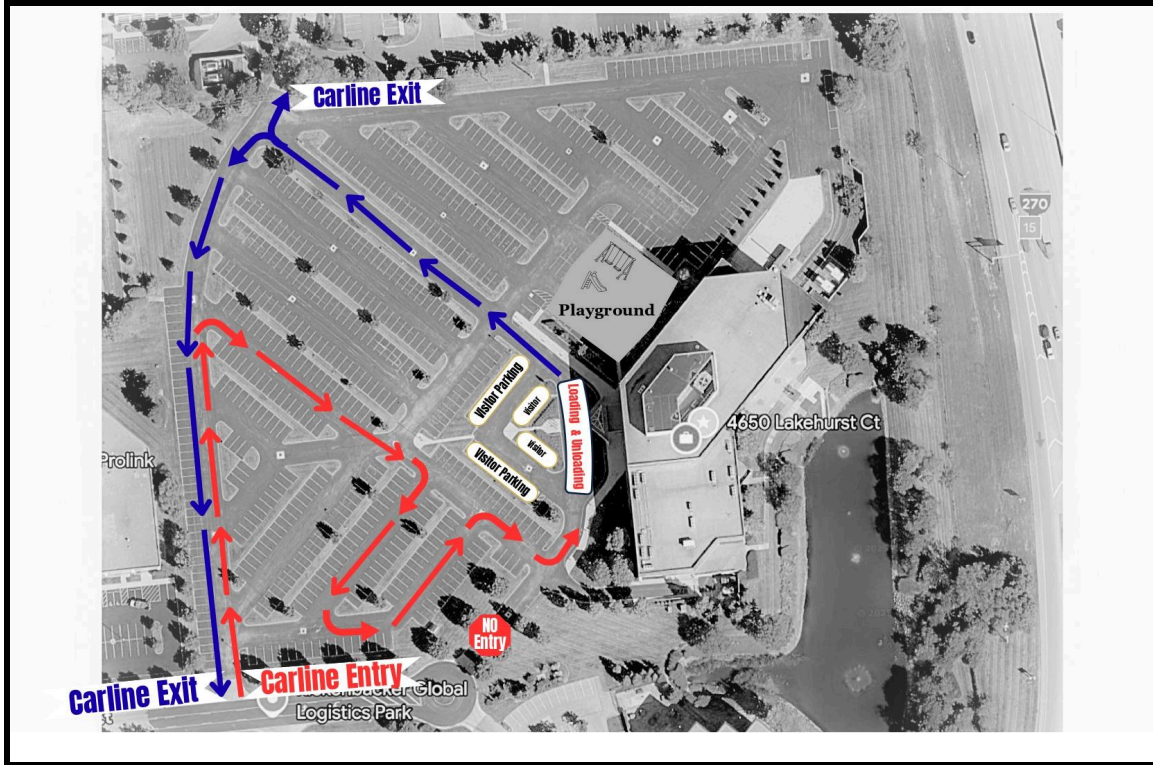
- **7:20 AM:** Carline begins. Students arriving between 7:20 AM and 7:30 AM must report directly to the **Cafeteria**, where breakfast is available for purchase.
- **7:30 AM:** Students may begin reporting directly to their homeroom classes.
- **7:45 AM: Class Begins.**
- **7:46 AM:** Students are marked **Tardy**.

Afternoon Dismissal

- **3:00 PM:** Dismissal begins.
 - **3:30 PM:** Carline ends.
-

Traffic Flow Instructions

Please refer to the **Arrival & Dismissal Carline Map** for a visual guide of the traffic pattern



1. Entering the Campus

- **Entrance:** Please enter the parking lot via the designated **Carline Entry** point at the south end of the lot (near the ProLink building)
- **Do Not Enter:** Please observe the "NO Entry" signs at the secondary entrance to prevent head-on collisions

2. The "Snake" Pattern (Red Arrows)

To prevent traffic from backing up onto the main road, we utilize a weaving pattern through the parking lanes:

- Upon entering, follow the **Red Arrows**
You will weave up and down the parking aisles as indicated on the map. Please stay in line and do not cut across parking spaces.
- Follow the flow toward the building designated as the **Loading & Unloading** zone

3. Loading & Unloading Zone

- The drop-off and pick-up area is located curbside, directly in front of the building near the **Playground**
- **Pull Forward:** Please pull all the way forward to fill the entire loading zone. This allows us to load/unload multiple cars simultaneously.
- **Stay in Your Vehicle:** For safety and speed, parents should remain in the driver's seat while staff assists students.

4. Exiting the Campus (Blue Arrows)

- After your student has been loaded or unloaded, follow the **Blue Arrows** to exit
- Proceed past the playground and wrap around the north side of the parking lot.
- You may utilize the **Carline Exit** lanes at the north or south ends of the lot to return to the main road